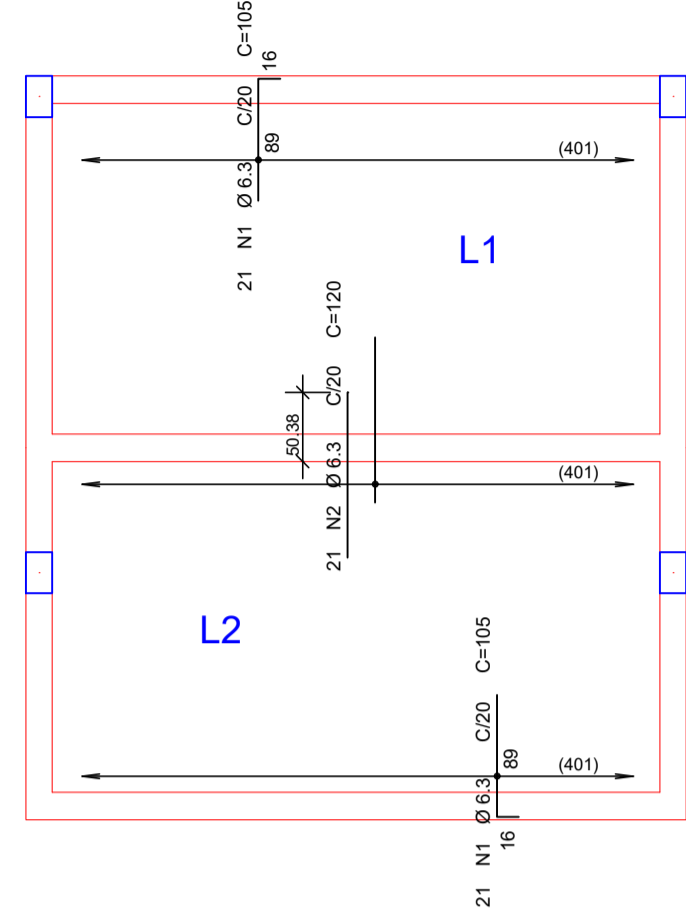
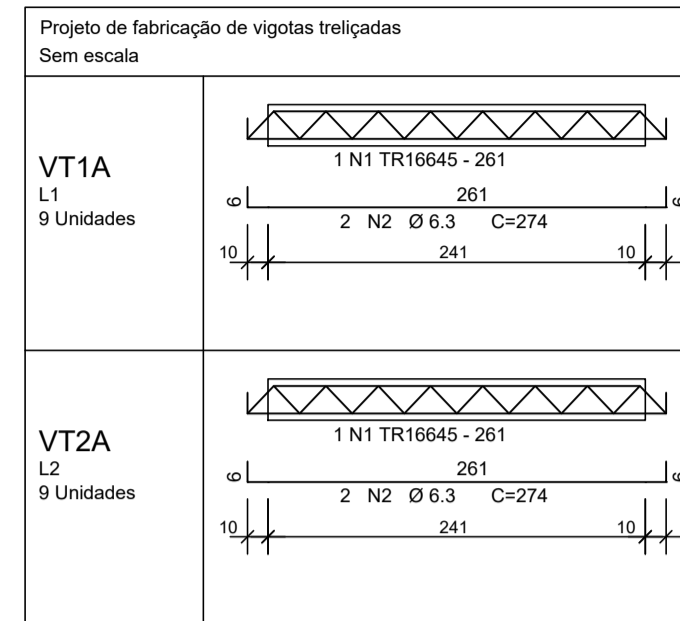
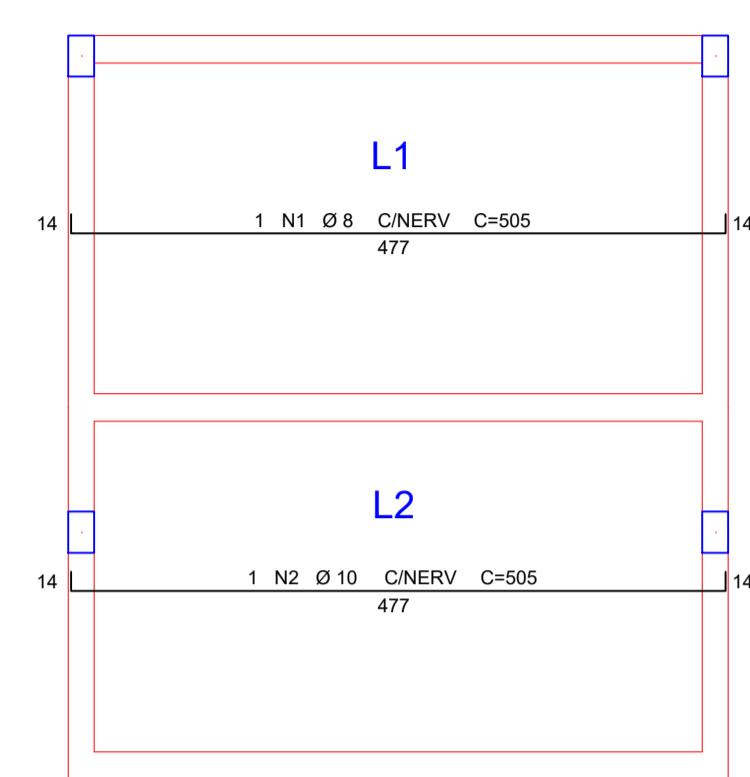


Arm. negativa vertical
ESCALA 1:50



Arm. positiva vertical
ESCALA 1:50



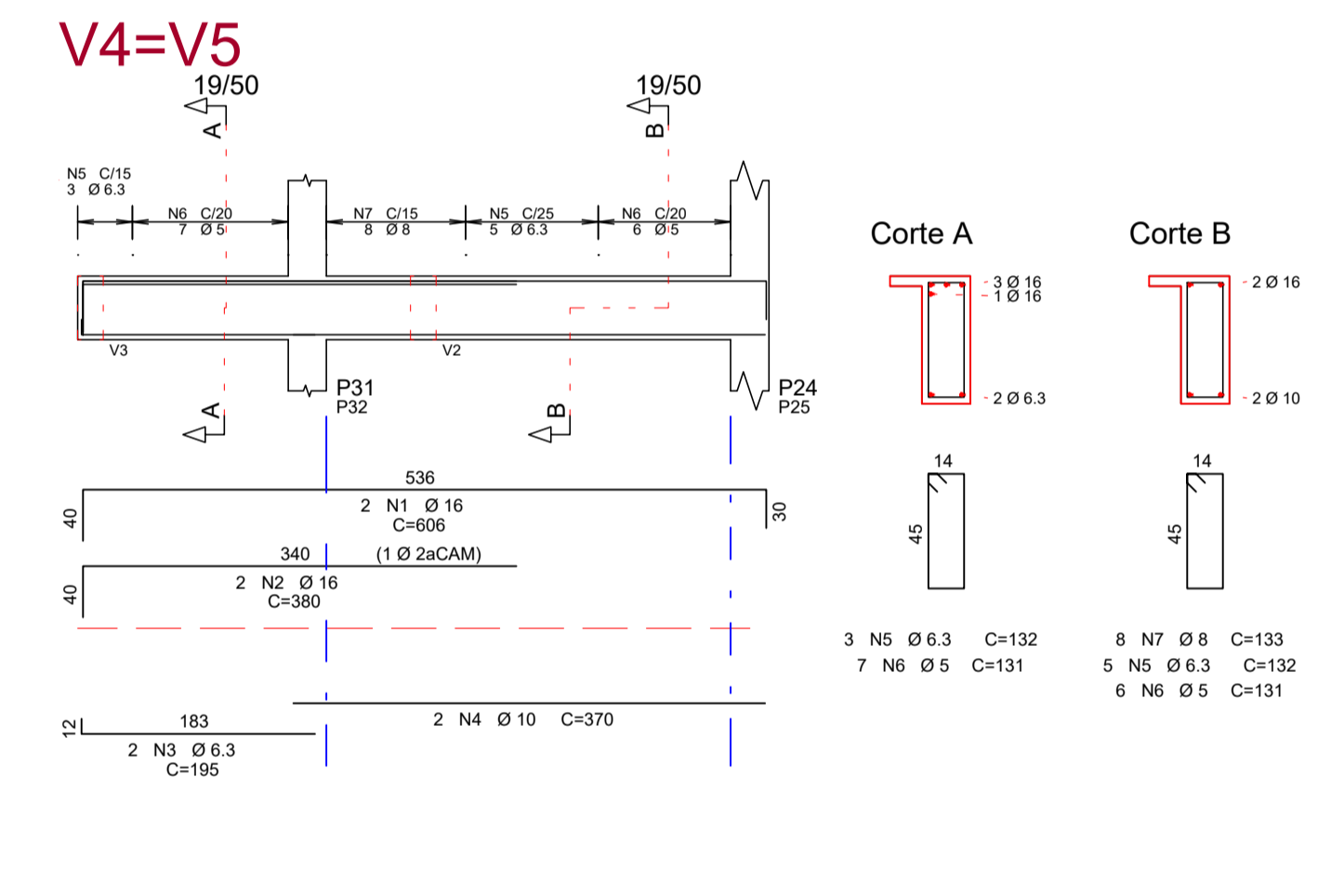
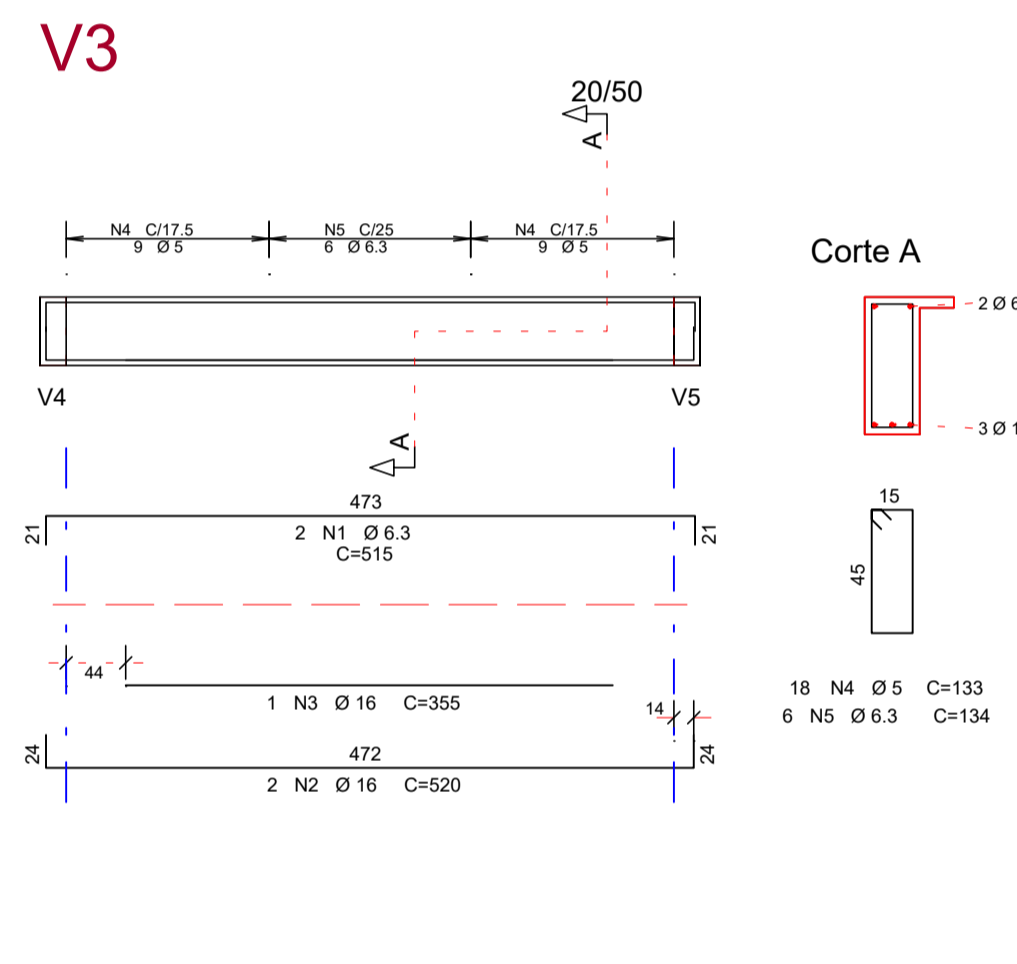
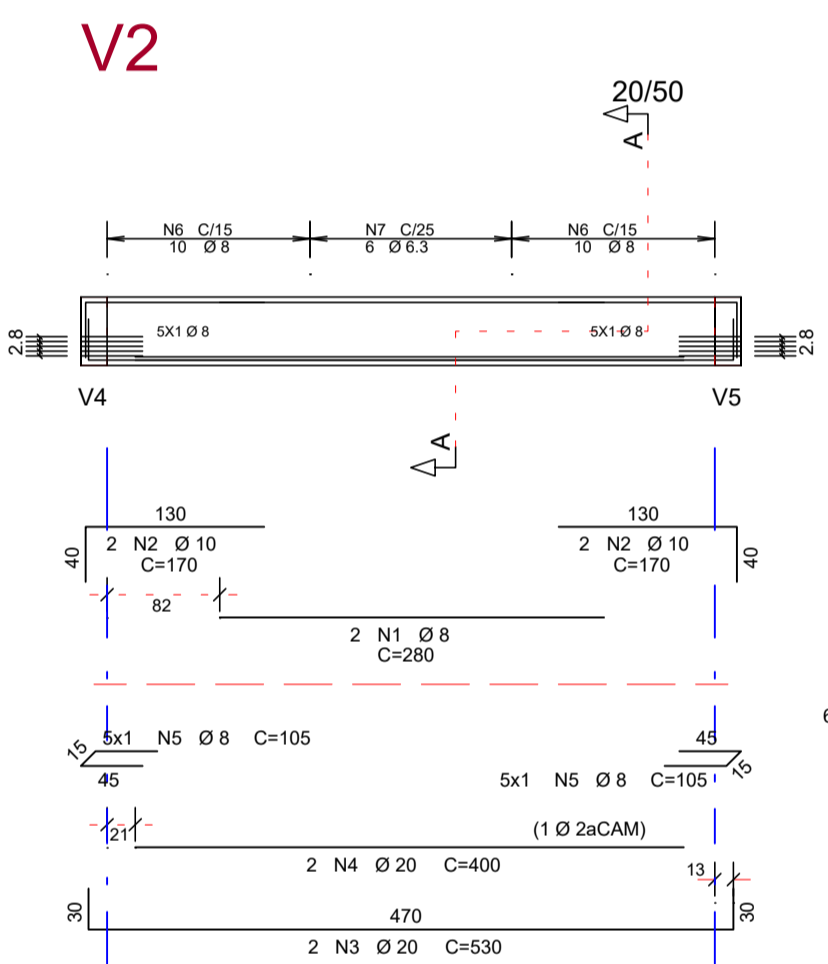
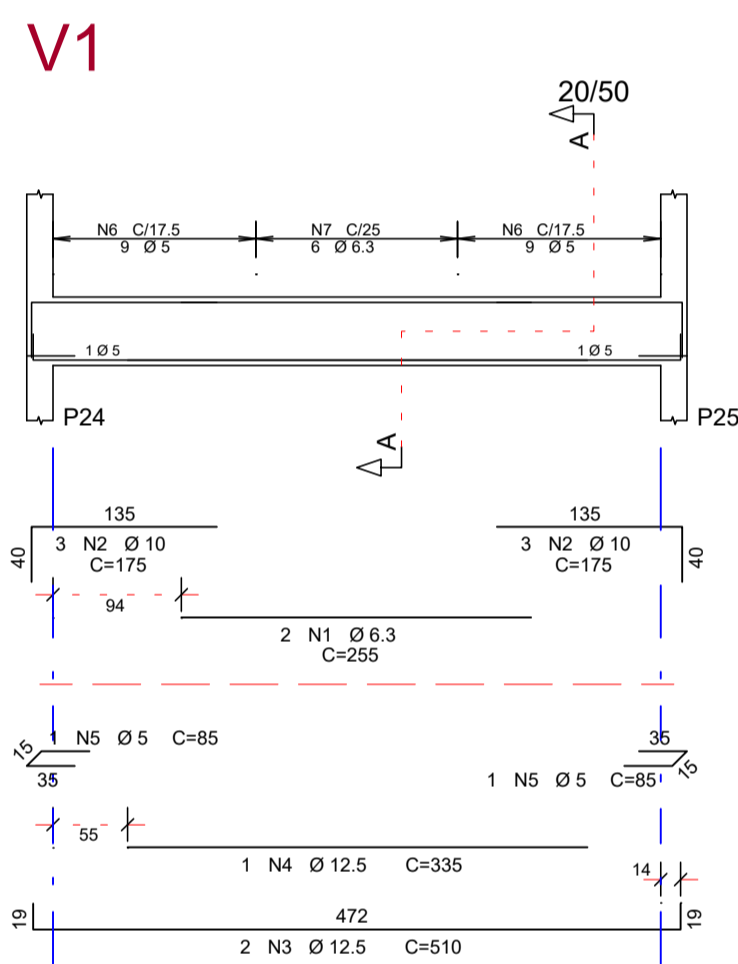
AÇO	POS	BIT (mm)	QUANT	COMPRIMENTO		
				UNIT (cm)	TOTAL (cm)	
VT1A (X9)	50	6.3	1	9	261	2349
			2	18	274	4932
VT2A (X9)	50	6.3	1	9	261	2349
			2	18	274	4932

RESUMO AÇO CA 50-60

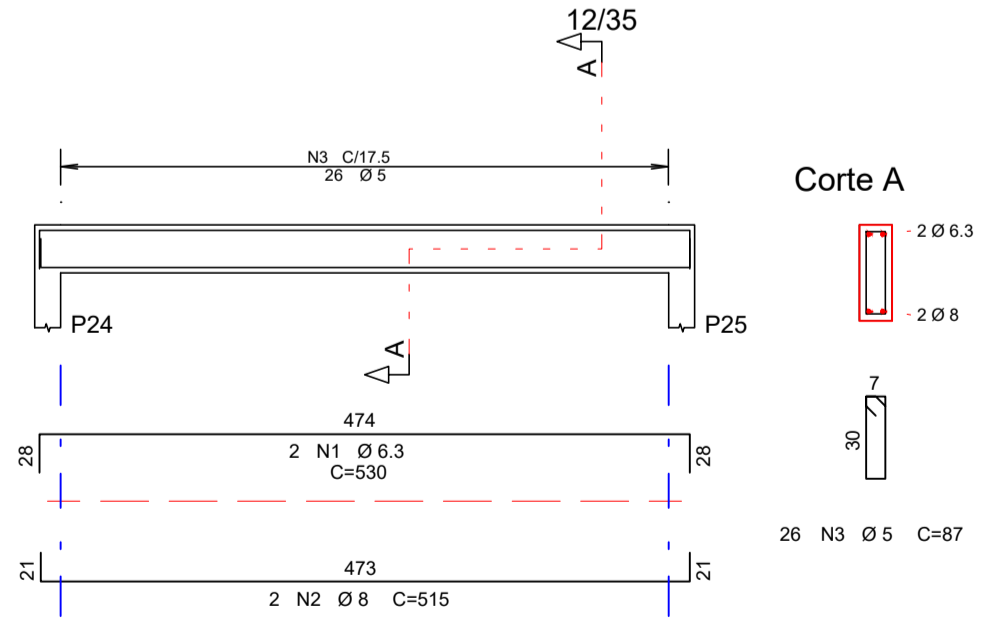
AÇO	BIT (mm)	COMPR (m)	PESO (kg)
TR16645	6.3	47	45
50		99	24
Peso Total TR16645 =			45 kg
Peso Total 50 =			24 kg

Tabela de Vigotas Treliçadas

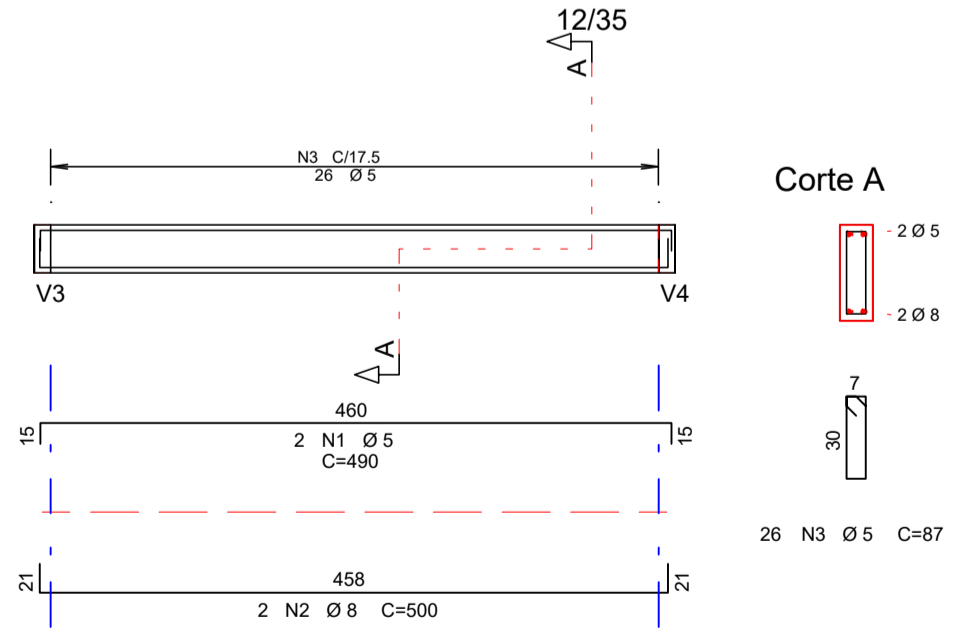
Dados		Vãos / Apóios		Armação Treliçada		Armadura Adicional (1)				Armadura Adicional (2)												
Laje	Vigota	No	LapE cm	Liv cm	LapD cm	Liot cm	Treliça	Unit cm	Total cm	No bar	Ø mm	DE cm	DD cm	Unit cm	Total cm	No bar	Ø mm	DE cm	DD cm	Unit cm	Total cm	
L1	VT1A	9	10	241	10	261	TR16645	261	2349	2	6.3	6	6	274	4925							
L2	VT2A	9	10	241	10	261	TR16645	261	2349	2	6.3	6	6	274	4925							



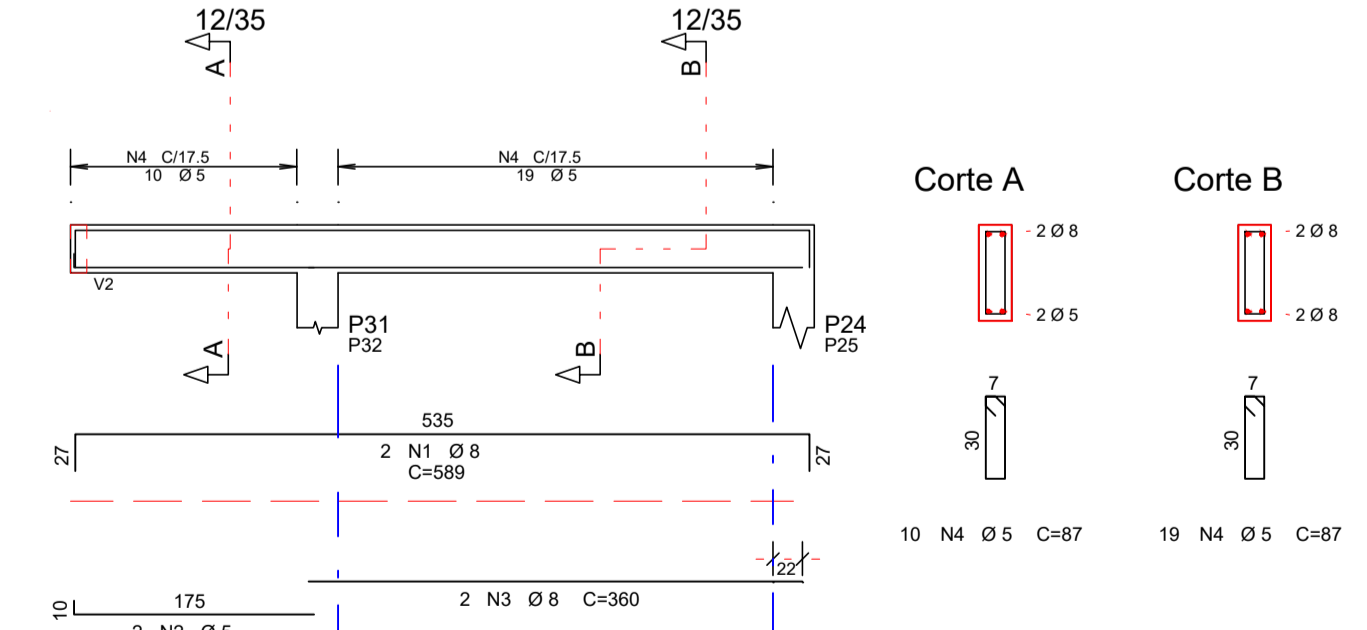
TAMPA RESERV. - V1



TAMPA RESERV. - V2



TAMPA RESERV. - V3=V4



FLAUBER FELIPE DE OLIVEIRA
ENGENHEIRO CIVIL - CREARN: 2118783353

PROJETO ESTRUTURAL
UNIDADE BÁSICA DE SAÚDE - TIPO 1

CONTRATANTE:
PREFEITURA MUNICIPAL DE PUREZA/RN

ASSUNTO DESTA FOLHA: Arm. negativa vertical / Arm. positiva vertical
TAMPA RESERV. - V1 / TAMPA RESERV. - V2 / TAMPA RESERV. - V3=V4
V1, V2, V3, V4, V5

ARQUIVO: 201-EST-017-R01 DESENHO: 21/21

DATA REV. R01: 17/06/2020 CONCRETO: Fck = 25MPa; AÇO: CA-50/60 ESCALA: INDICADA

FRANCHA: 21/21

Direitos autorais atribuídos. É expressamente proibida a reprodução total ou parcial deste material sem autorização prévia do autor.